



# GMT MONTHLY MEMBERSHIP PROGRESS REPORT

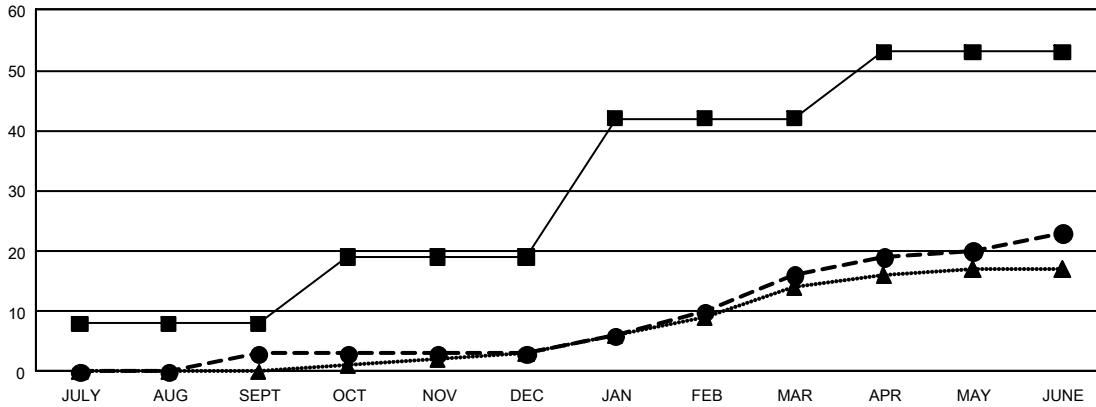
## GAT Constitutional Area 5 - Japan

Results as of: 6/30/2024

REPORT DOES NOT INCLUDE CLUBS IN UNDISTRICTED AREAS.

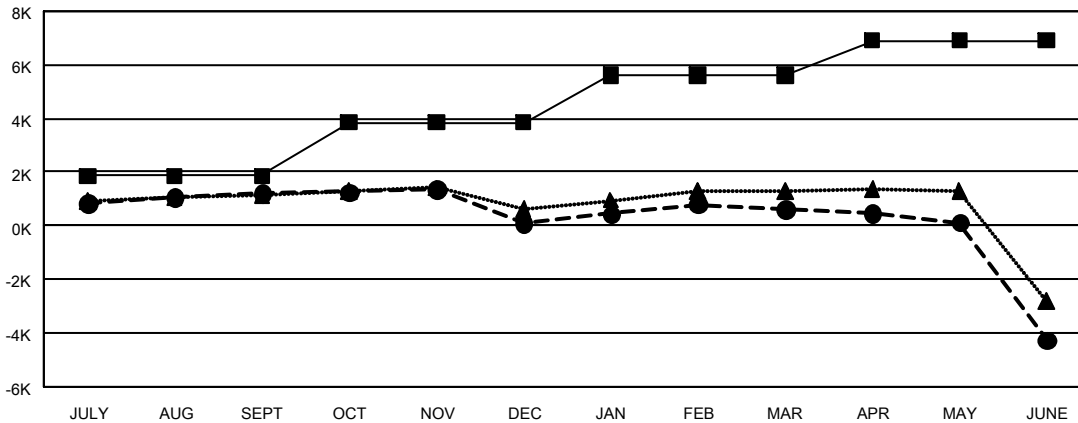
Clubs				Members			
RESULTS FOR 2023-2024				RESULTS FOR 2023-2024			
QUARTER	NEW CLUB GOAL	NEW CLUBS	DROPPED CLUBS	QUARTER	MEMBER GROWTH NET GOAL	MEMBER GROWTH ACTUAL	DROPPED MEMBERS ACTUAL (including transfers)
JULY/AUG/SEPT	8	3	3	JULY/AUG/SEPT	1,850	2,926	1,552
OCT/NOV/DEC	11	0	9	OCT/NOV/DEC	1,994	1,269	2,333
JAN/FEB/MAR	23	13	2	JAN/FEB/MAR	1,787	2,211	1,609
APR/MAY/JUNE	11	7	66	APR/MAY/JUNE	1,271	2,069	6,778

GOALS AND ACTUAL NEW CLUBS CUMULATIVE



- CURRENT YEAR GOALS FOR NEW CLUBS
- CURRENT YEAR ACTUAL NEW CLUBS
- ▲ LAST YEAR ACTUAL NEW CLUBS

GOALS AND ACTUAL MEMBERS CUMULATIVE



- MEMBER GROWTH NET GOAL
- MEMBER GROWTH ACTUAL
- ▲ LAST YEAR MEMBERSHIP ACTUAL

DROPPED CLUBS: 80	2,043 CLUBS OF 2,781 ADDED 1 OR MORE NEW MEMBERS	<b>GENDER DISTRIBUTION</b>
		MALE 71,487 (77.37%)
		FEMALE 20,907 (22.63%)
<b>DROPPED MEMBERS</b>	<a href="#">CLICK HERE FOR CUMULATIVE MEMBERSHIP DATA</a>	TOTAL FAMILY UNIT MEMBERS 27,202
DECEASED 826		FAMILY MEMBERS PAYING HALF DUES 15,236
CLUB CANCELLED 60		
OTHER 11,306		
<b>TOTAL 12,192</b>		